

TopInfo

Vitodens 100-W WB1C NEW generation gas fired condensing boiler



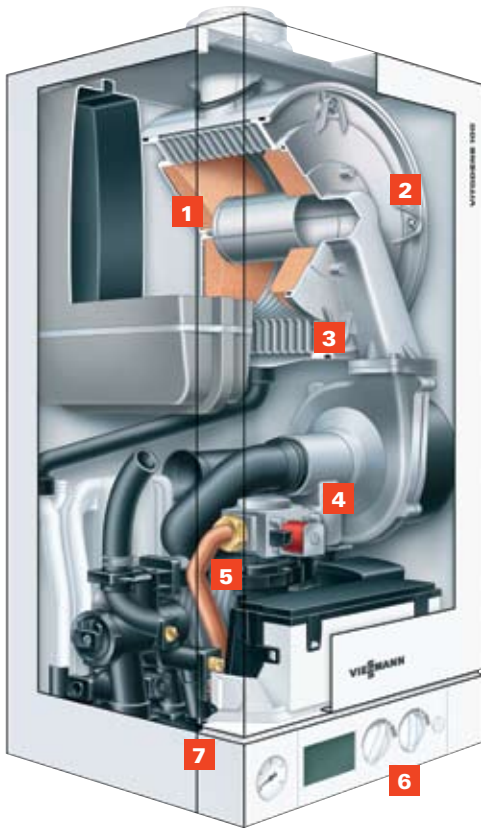
The NEW Vitodens 100-W WB1C consists of three combination boilers (26, 30 and 35 kW) and four system boilers (19, 26, 30 and 35 kW) with an improved modulation range of 1:4.

These new models come with a 5 year comprehensive parts and labour warranty as standard as well as a 10 year warranty on the Inox-Radial stainless steel heat exchanger.

Its new sturdier casing improves ease of servicing (with all parts easily accessible from the front), reduces the weight and noise emissions and gives better access to the controller. The maximum heat output range can be range rated to suit the heat load of the property.

This model will run on natural gas or LPG by adding a simple conversion kit.

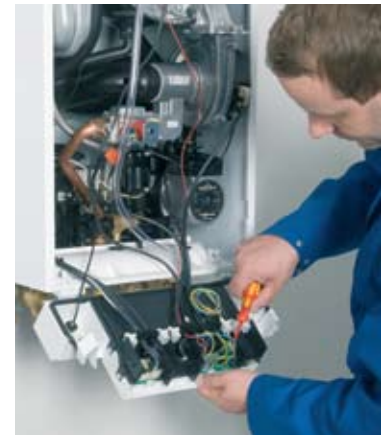
- Flue length now up to 17 m concentric for horizontal and vertical application
- Can be range rated to suit heat load of property
- Built in filling loop
- Combined condensate / PRV outlet for ease of installation
- Improved modulation range 1:4
- Lighter in weight for ease of handling
- All parts accessible from the front
- More compact dimensions, one size for all outputs



Combination model

Vitodens 100-W

- 1 Expansion vessel
- 2 MatriX cylinder burner
- 3 InoX-Radial heat exchanger
- 4 Gas valve
- 5 AquaBloc
- 6 Vitotronic controller with added features
- 7 Improved sturdier casing



Easy access from the front

Product	Vitodens 100-W WB1C	
Heat output	6 - 35 kW	
DHW output	19, 26, 30 & 35 kW	
Modulation range	1:4	
DHW flow rate @ 35°C rise	26 kW combi	10.6 l/min
	30 kW combi	12.3 l/min
	35 kW combi	14.3 l/min
Types	combi/system	
Boiler efficiency	97 % gross	
SEDBUK	>90 % (A)	
Primary heat exchanger (stainless steel)	InoX-Radial	
Burner	MatriX cylinder	
Dimension	depth x width x height	350 x 400 x 700 mm
Flue emissions NOx/CO	<39/40 mg/kWh	
Weight	35 kg	
DHW comfort	•	
LPG	•	
Weather compensation	•	
Plug in wireless analogue clock single channel	•	
Plug in wireless analogue clock 2-channel	•	
Stand-off frame	•	
Telescopic flue (horizontal)	•	
4-pipe system option (system boiler)	•	
Built-in filling loop	•	
CH range rate feature	•	
Adjust heat output to flue length	•	



Boiler shown with mixer unit