

Wall mounted gas condensing boiler  
**VITODENS 050-W**

**VIESSMANN**  
climate of innovation



Heating systems ◀  
Industrial systems  
Refrigeration systems

The Vitodens 050-W wall mounted gas condensing boiler offers excellent heating and DHW convenience with a particularly advantageous price/performance ratio.

## 10 Year Warranty

on all stainless steel heat exchangers for  
gas condensing boilers up to 150 kW

With the Vitodens 050-W, Viessmann now offers an attractively priced wall mounted gas condensing boiler with proven quality. An extensive range of accessories makes the Vitodens 050-W equally suitable for either new build or modernisation. It is offered with two DHW output ratings (5.9 to 29 and 8 to 35 kW), as a combi boiler with an integral instantaneous water heater.

An electronic boiler control unit for thermostatic mode and weather compensated mode is already integrated into the Vitodens 050-W, along with a frost stat. The outside temperature sensor is available as an accessory.

### Quiet and compact

The Vitodens 050-W features a particularly low level of operating noise and its components are accessible from the front for ease of service and maintenance.

With a height of only 707 mm, the Vitodens 050-W is one of the smallest wall mounted boilers in its class. Its compact dimensions recommend it as a replacement for outdated boilers in multi storey buildings – including up to five boilers on different floors connected to one vertical flue system.

### Inox-Radial heat exchanger and cylinder burner made from stainless steel

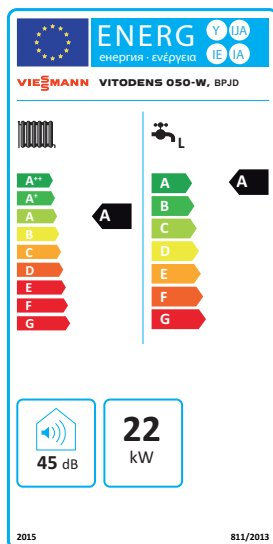
The high quality stainless steel Inox-Radial heat exchanger efficiently converts the supplied energy into heat. Its efficiency (to DIN) is 97 percent ( $H_s$ ) [gross cv] or according to SEDBUK > 89 % (2009/2012). The stainless steel cylinder burner therefore consumes relatively little natural gas, with lower CO<sub>2</sub> emissions and less impact on the environment as a result.

### Easy operation with optional remote control

The heating water and DHW temperatures can be set quickly with the user friendly buttons. Operating states and temperatures are shown on the digital display screen.

A number of options are available for convenient operation of the Vitodens 050-W:

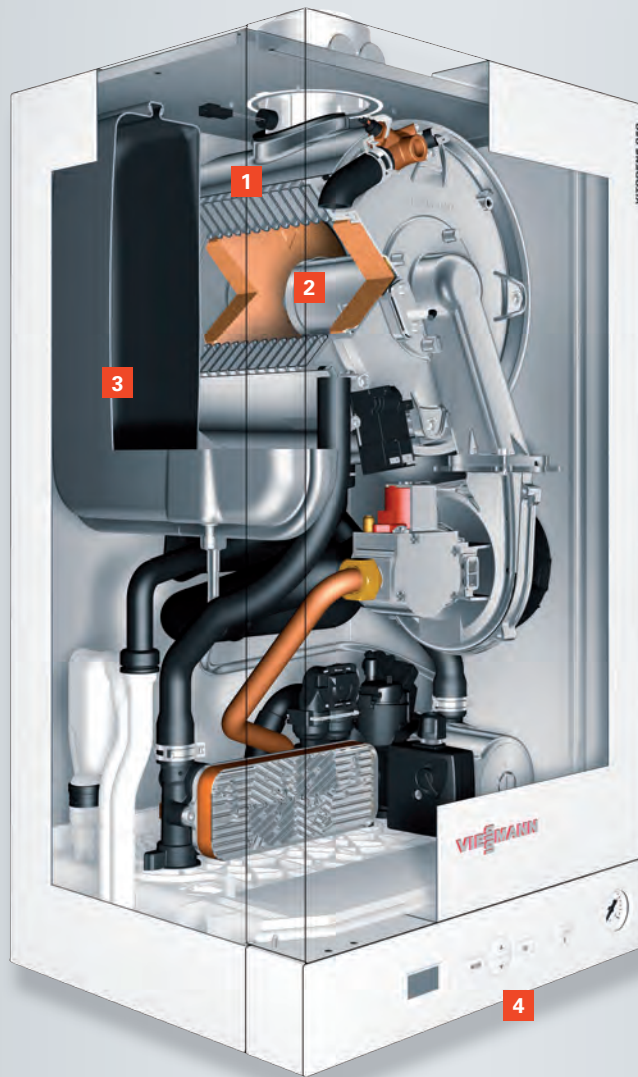
- Analogue time switch with day program and digital time switch with seven-day program. The time switches can be plugged into the wall mounted boiler's control unit.
- Hardwired analogue room thermostats (24 V) with and without day program.
- Analogue wireless room thermostat with day program. The receiver can be plugged into the wall mounted boiler's control unit.
- Hardwired digital clock thermostat with large LCD screen and individual day and seven-day program.
- Digital wireless clock thermostat with large LCD screen and individual day and seven-day program. The receiver can be plugged into the wall mounted boiler's control unit.
- Also compatible with third party controls (24V)



Control unit with integral diagnostic system

- 1 Dummy cover for optional wireless accessories and time switches
- 2 LCD screen
- 3 User interface
- 4 ON/OFF switch
- 5 Pressure gauge

3 year warranty as standard  
Option to increase to 7 years\*



- 1 Inox-Radial heat exchanger made from stainless steel
- 2 Cylinder burner made from stainless steel
- 3 Expansion vessel
- 4 Digital control unit



Low operating noise and compact dimensions make this boiler ideal for installation in living areas

#### Take advantage of these benefits

- Attractively priced wall mounted gas condensing boiler
- Combi boiler: 29 and 35 kW
- Economical and efficient, with high standard seasonal efficiency [to DIN] up to 97 % (H<sub>s</sub>) [gross cv] / 108 % (H<sub>t</sub>) [net cv] or SEDBUK > 89 % (2009/2012)
- ErP efficiency rating A
- High efficiency A rated pump
- Modulation range up to 1:4
- Extensive system accessories
- Inox-Radial heat exchanger and cylinder burner made from stainless steel
- Easy operation, optionally also via room thermostats
- Plug in time clock and wireless receiver options
- Weather compensation option available
- Ideal for installation in living areas due to low operating noise and compact dimensions
- Compact installed height, with recessed fittings not requiring pipe cover
- Improved access to serviceable parts e.g. plate heat exchanger
- Ease of wiring
- 3 year comprehensive warranty as standard
- Viessmann Trained Installers can now offer their customers an extended warranty option to 7 years\*

## Technical Data Vitodens 050-W (Type BPHD)



<b>Rated heating output (50/30 °C)</b>	kW	6.5 – 24.0	8.8 – 33.0
<b>Rated heating output (80/60 °C)</b>	kW	5.9 – 21.9	8.0 – 30.1
<b>Rated heating output for DHW heating</b>	kW	5.9 – 29	8.0 – 35
<b>Rated heat input</b>	kW	6.1 – 22.4	8.2 – 30.9
<b>Efficiency</b>			
– At full load (to DIN)	%	97.4	97.5
– At partial load (to DIN)	%	108.8	108.7
– SEDBUK (2009/2012)	%	> 89.0	> 89.0
<b>NO<sub>x</sub> class</b>		5	5
<b>NO<sub>x</sub> emissions</b>		<39mg/kWh	<39mg/kWh
<b>Nominal water flow rate for DHW heating</b>			
At ΔT 35 K to EN 13203	l/min	12	14
<b>DHW convenience</b>			
According to EN 13203		***	***
<b>Expansion vessel</b>			
Capacity	litres	8	8
<b>Permiss. operating pressure</b>			
	bar	3	3
	MPa	0.8	0.8
<b>Weight</b>	kg	37	39
<b>Dimensions</b>			
– Length (depth)	mm	350	350
– Width	mm	400	400
– Height	mm	707	707
<b>Flue gas connection</b>	Ø mm	60	60
<b>Ventilation air connection</b>	Ø mm	100	100
<b>Energy Efficiency Class</b>		A	A

Your trade partner:

Viessmann Direct  
 Unit 8 The Centurion Centre  
 Castlegate Business Park  
 Old Sarum  
 Salisbury  
 Wiltshire  
 SP4 6qx