

# Installation instructions

## for contractors



## Flow control switch replacement

for Vitodens 200, type WB2 and Vitodens 300, type WB3A

---

### Safety instructions



**Please follow these safety instructions closely to prevent accidents and material losses.**

#### Safety instructions explained

##### **Note**

*Details identified by the word "Note" contain additional information.*

Installation, initial start-up, inspection, maintenance and repairs must only be carried out by a competent person (heating engineer/installation contractor).

Before working on the equipment/heating system, isolate the power supply (e.g. by removing a separate mains fuse or by means of a mains isolator) and safeguard against unauthorised reconnection.

When using gas as fuel, also close the main gas shut-off valve and safeguard against unauthorised reopening.

Repairing components which fulfil a safety function can compromise the safe operation of your heating system. For replacements, use only original spare parts supplied or approved by Viessmann.

### Opening and draining the boiler

1. Remove front panel and cover panel.
2. Drain the boiler on the heating water side.



Service instructions  
Vitodens 200

## Application information

Serial no. (see type plate):

- 7142124
- 7142125
- 7159979
- 7159980
- 7159981
- 7159982
- 7176778

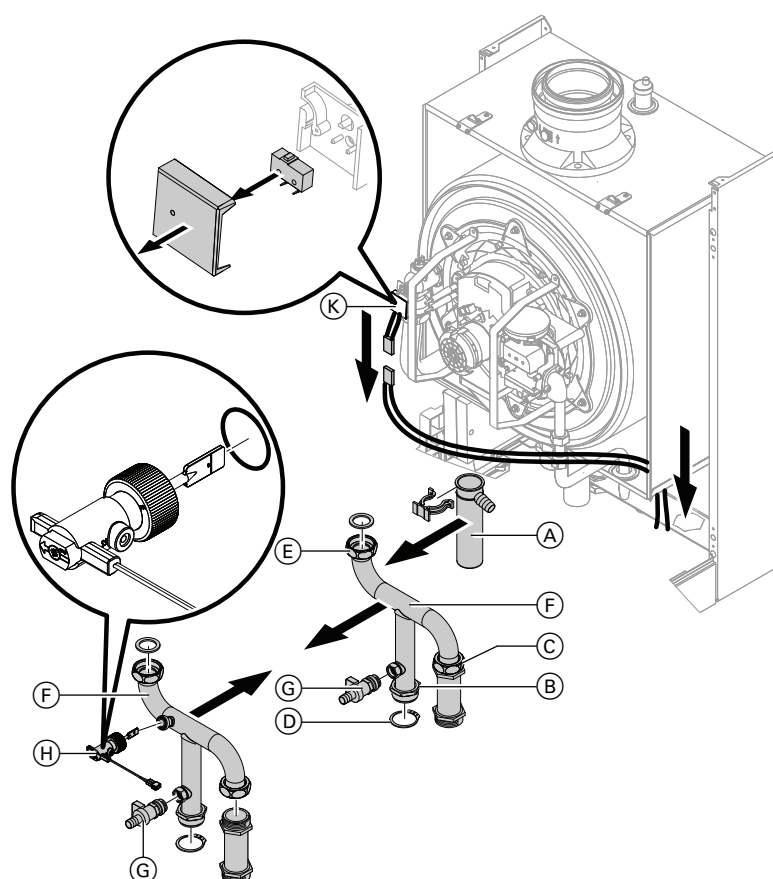
- 7176779
- 7176780
- 7176781
- 7179093
- 7179094
- 7188577
- 7188578

## Installation

### **Note**

*Residual water may escape during removal. If required, cover the components below the pipework.*

## Installation (cont.)



1. If installed: Remove the circulation pump from the heating water return.
2. Remove trap (A).
3. Undo union nuts (B) and (C) and remove on-site heating water return lines.
4. Remove locking ring (D) with circlip pliers (DIN 5254 A 2).
5. Undo union nut (E) and remove return pipe (F).
6. Remove BDF valve (G) from removed return pipe (F) and seal into new return pipe (F).

## Installation (cont.)

7. Insert new return pipe (F) with new gaskets and secure with locking ring (D).

Torque for union nuts:

- (B) 100 Nm  
(C) and (E) 130 Nm

8. Mount on-site heating water return lines with new gaskets.
9. Remove protective sleeve from new flow control switch (H). Remove O-ring from protective sleeve and set into the groove on flow control switch (H).
10. Mount flow control switch (H) and tighten union nut.

### Note

*Install the flow control switch in accordance with the diagram shown and align arrow in the flow direction.*

11. Undo cable ties from the connecting cable on old flow control switch (K).
12. Pull connecting cable with plug 33 from old flow control switch (K).
13. Remove plug 33 from the connecting cable.

14. Pull out connecting cable downwards through the diaphragm grommet.

15. Refit plug 33 to the connecting cable.

16. Plug connecting cable into new flow control switch (H) and secure with cable ties.

### Note

*The connecting cable must not contact hot components.*

17. Re-secure all other cables with cable ties.
18. Remove cover from flow control switch (K) and remove microswitch. Refit the cover.
19. Assemble the boiler in reverse order.
20. Fill the boiler with water, vent, flush and check for leaks.



Service instructions

5547 961 GB

5



9

5547 961 GB



5547 961 GB

7



Viessmann Werke GmbH&Co KG  
D-35107 Allendorf  
Telephone: +49 6452 70-0  
Fax: +49 6452 70-2780  
[www.viessmann.com](http://www.viessmann.com)

Viessmann Limited  
Hortonwood 30, Telford  
Shropshire, TF1 7YP, GB  
Telephone: +44 1952 675000  
Fax: +44 1952 675040  
E-mail: [info-uk@viessmann.com](mailto:info-uk@viessmann.com)

5547 961 GB Subject to technical modifications.