



GAS FIRED CONDENSING COMBI AND SYSTEM BOILERS

Heating comfort in the most efficient way:
VITODENS 200-W

WiFi inside

Best Buy
Which?
Gas Boilers September 2019

Which? Best Buy for the 3rd year running.

- Best in class for Reliability
- Best in class for Engineer's Recommendation

The new generation of heating systems. Greater efficiency, lower emissions, simple operation. Future-proof, durable and digital. The Vitodens 200-W sets the standard for the future.



DESIGN PLUS
powered by ISH



The Vitodens 200-W is an intelligent energy centre, which meets the highest demands for a comfortable heat supply. With its modern, functional design as well as its plain matt surface it blends harmoniously into any living environment.

**Integrated WiFi interface:
Thermal comfort becomes digital**

The integrated WiFi interface connects the gas condensing wall-mounted boiler to the internet on request - the basis for networking and digital services. The ViCare app makes it even simpler to operate: you have all the functions you need to control the heating system at your fingertips. In the case of a problem, the heating specialist is informed directly via the app and can quickly take remedial action.

**Energy cockpit: Easy adjustment
and operation for increased efficiency**

How easy is setting and operation? This is one of the most important criteria when choosing a new heating system. The Vitodens 200-W impresses with its exceptionally high operating comfort. It can be operated via smartphone, tablet or directly on the large 7-inch colour touch display which is very simple and intuitive to operate. Plain text and graphic displays guide you through all the menu items with ease. And with the energy cockpit, your energy consumption is visible at a glance.



VITODENS 200-W
1.9 to 35 kW

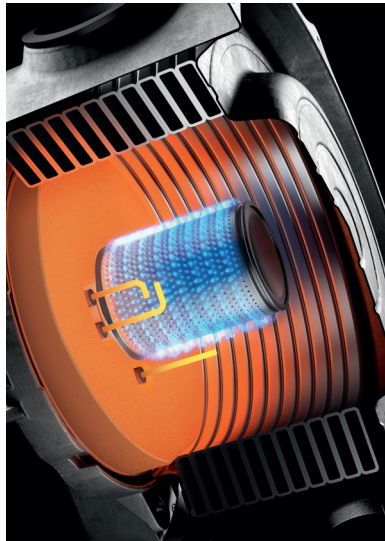
MatriX-Plus burner:

The heart of your heating system

The new MatriX-Plus burner ranks above all others with its efficient operation as well as low operating costs, along with its low pollutant and noise emissions. The special stainless steel MatriX surface is not sensitive to high temperatures and thus provides for reliable performance and a long service life.

Lambda Pro Plus: Automatic combustion control reduces costs

Automatic monitoring of combustion quality compensates for fluctuating gas qualities and prolongs the service life, extending the flue inspection interval to three years. It ensures year round efficiency and savings on maintenance costs.



Lambda Pro Plus

- Adaptation to gas quality
- Consistently high energy efficiency
- Future security
- Low maintenance costs
- Three year inspection interval



Stainless steel Inox-Radial: Efficient and durable

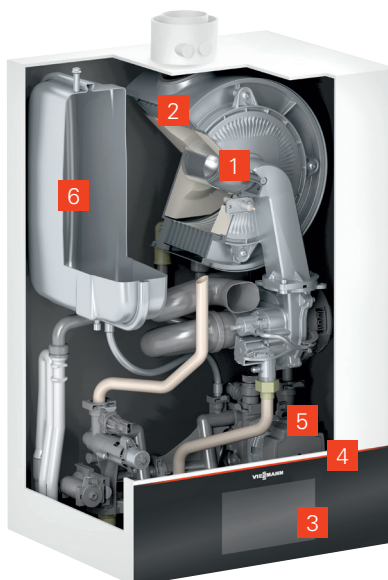
Stainless steel makes all the difference. The corrosion resistant Inox-Radial heat exchanger, made of stainless steel, is the the heart of the Vitodens 200-W. It converts the energy used into heat with exceptional efficiency. Virtually loss-free, with a hard to surpass efficiency of 98 percent. All of this is combined with the safety of the exceptionally durable, high-quality stainless steel.

10 Year warranty

on stainless steel heat exchangers for oil/gas condensing boilers up to 150 kW

VITODENS 200-W IMPRESSES

- + Particularly simple, intuitive operation and integrated WiFi interface
- + High operational reliability due to integrated Lambda Pro Plus combustion controller
- + Greater efficiency and lower nitrogen oxides thanks to the new MatriX-Plus burner
- + All consumption visible with the energy cockpit
- + Proper operation always visible with the fluorescent Lightguide



VITODENS 200-W
(Type B2HE)

- 1** MatriX-Plus burner with Lambda Pro Plus combustion control
- 2** Inox-Radial heat exchanger
- 3** 7-inch colour touch display
- 4** Lightguide
- 5** High efficiency pump
- 6** Expansion vessel

Wall-mounted gas condensing boiler **VITODENS 200-W**

Vitodens 200-W		Gas condensing system boiler (Type B2HE) and combi boiler (Type B2KE)			
Boiler type		System	System	System Combi	System Combi
Rated heat output					
50/30 °C	kW	1.9 – 11.0	1.9 – 19.0	1.9 – 25.0	1.9 – 32.0
80/60 °C	kW	1.7 – 10.1	1.7 – 17.4	1.7 – 22.9	1.7 – 29.3
Dimensions					
Depth	mm	360	360	360	360
Width	mm	450	450	450	450
Length	mm	700	700	700	700
Dry weight					
	B2HE	33	33	33	33
	B2KE			34.5	34.5
Flue gas connection	Ø mm	60	60	60	60
Ventilation air connection	Ø mm	100	100	100	100
Rated output for DHW heating					
	B2HE	17.4	17.4	22.9	29.3
	B2KE			31.1	34.2
Energy efficiency class		■	◁ A ▷	◁ A ▷	◁ A ▷

The products are tested and approved for natural and liquid gas according to EN 15502.

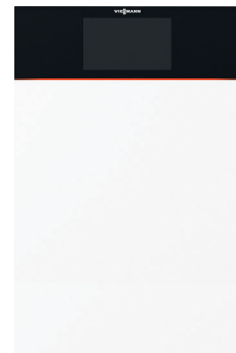
PRODUCT FEATURES

- + Compact wall-mounted appliances for installation in kitchen cupboard, utility room or bathroom
- + Standard efficiency: 98 % (Hs)
- + Modulation range up to 1:17
- + Large water content, low cycle frequency even with low heat removal
- + Durable and efficient thanks to Inox-Radial heat exchanger
- + MatriX-Plus burner with long service life due to stainless steel MatriX surface
- + Lambda Pro Plus combustion controller for all types of gas
- + Quiet operation due to low fan speed
- + 7-inch colour touch display for ease of operation, also possible via ViCare app
- + Integrated WiFi interface for internet connection
- + Energy cockpit for visualisation of energy generation and energy consumption
- + Suitable for integration of a solar thermal system
- + Energy efficiency class: A
- + 3 year warranty as standard
- + 5 year warranty if fitted by a Viessmann Trained Installer
- + 10 year warranty option (chargeable when registered through the Viessmann Installer Portal)

Your trade partner:

Viessmann Direct
Unit 8, The Centurion Centre
Castlegate Business Park
Old Sarum
Salisbury
SP4 6QX

+44 (0)1722 417875
sales@viessmanndirect.co.uk
viessmanndirect.co.uk



Convenient operation at eye-level through upwards movable display