

# Installation instructions

for contractors

# VISSMANN

## Mixer extension kit

Part no. 7441998

## Mixer motor

Part no. 7450657

---

### Safety instructions



**Please follow these safety instructions closely to prevent accidents and material losses.**

Installation, initial start-up, inspection, maintenance and repairs must only be carried out by a competent person (heating engineer/installation contractor).

Before working on the equipment/heating system, isolate the power supply (e.g. by removing a separate mains fuse or by means of a mains isolator) and safeguard against unauthorised reconnection.

When using gas as fuel, also close the main gas shut-off valve and safeguard against unauthorised reopening.










Repairing components which fulfil a safety function can compromise the safe operation of your heating system. For replacements, use only original spare parts supplied or approved by Viessmann.

### Information

#### Disposal of packaging

Please dispose of packaging waste in line with statutory regulations.

## Symbols

Sym- bol	Meaning
	Reference to other document containing further information
	Step in a diagram: The numbers correspond to the order in which the steps are carried out.
	Warning of material losses and environmental pollution
	Live electrical area
	Pay particular attention.
	<ul style="list-style-type: none"> <li>■ Component must audibly click into place.</li> <li>or</li> <li>■ Acoustic signal</li> </ul>
	<ul style="list-style-type: none"> <li>■ Fit new component.</li> <li>or</li> <li>■ In conjunction with a tool: Clean the surface.</li> </ul>
	Dispose of component correctly.
	Dispose of component at a suitable collection point. Do <b>not</b> dispose of component in domestic waste.

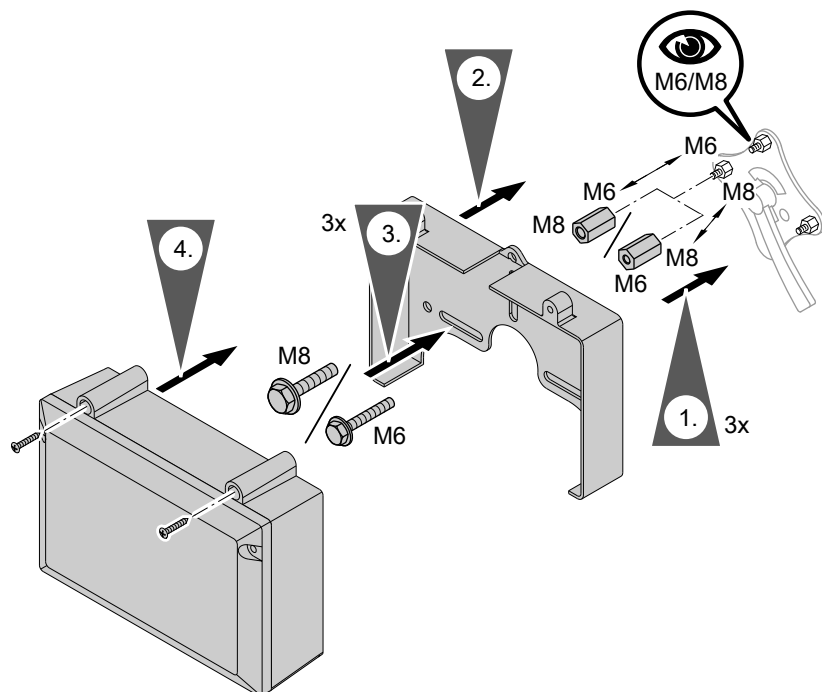
## Information (cont.)

### System examples

For available system examples, see  
[www.viessmann-schemes.com](http://www.viessmann-schemes.com)

## Installing an extension kit

### Fitting the mixer motor to the mixer

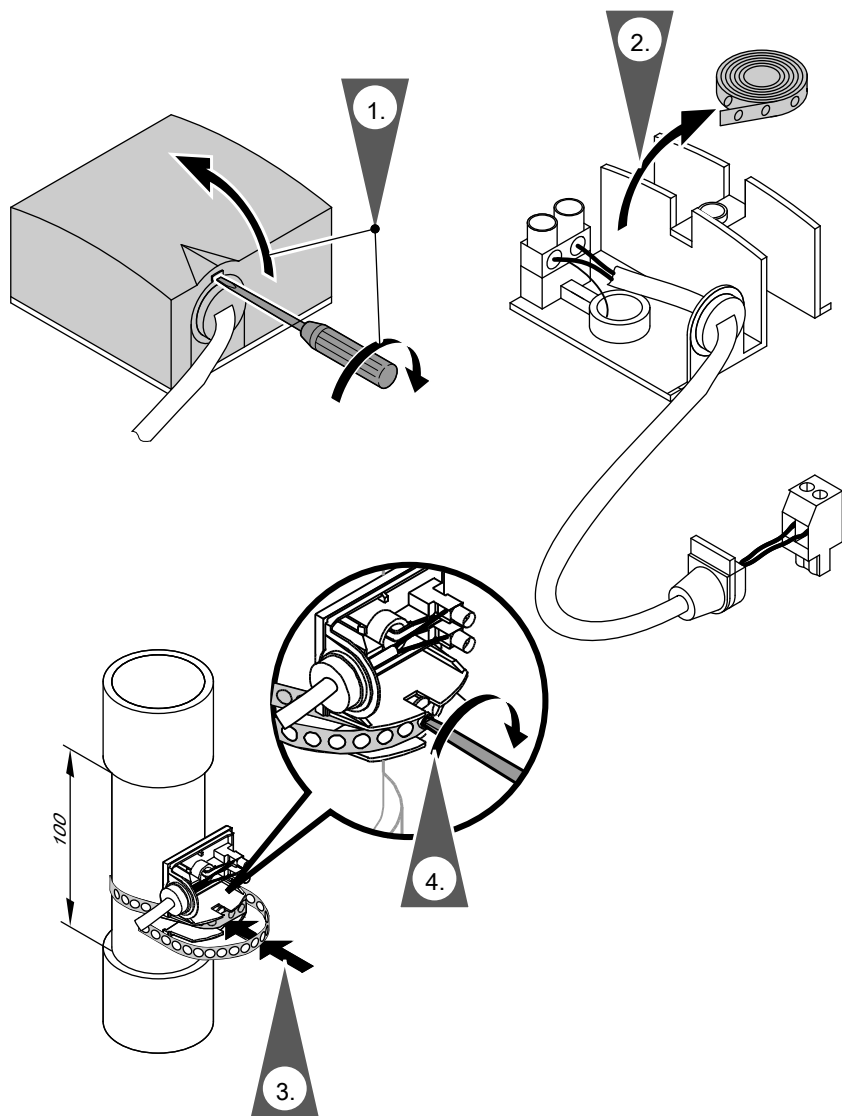


## Installing an extension kit (cont.)

### Fitting the flow temperature sensor

- Fit the flow temperature sensor immediately downstream of the heating circuit pump in the direction of flow at the heating flow pipe
- When using plastic pipes, fit the sensor on any metal intermediate piece
- Clean the flow pipe down to bare metal
- Heat conducting paste is not required
- Never thermally insulate the sensor

## Installing an extension kit (cont.)



## Connecting the extension kit to the control unit

### Connecting the flow temperature sensor

Push sensor plug **2** into the corresponding socket of the control unit.



Installation and service instructions of the relevant control unit

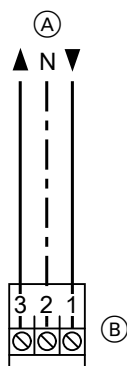
### Connecting the mixer motor

Push connecting cable plug **52** into the corresponding socket of the control unit.



Installation and service instructions for the relevant control unit

### Connecting the mixer motor as a replacement



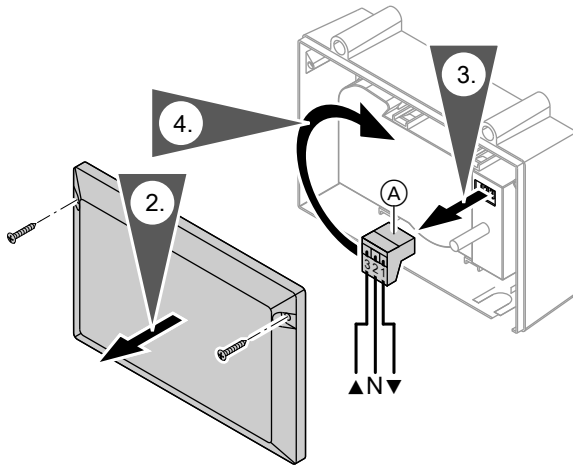
1. Undo the 3-core cable from the mixer motor to be replaced.
2. Connect the 3-core cable to the plug of the new mixer motor in accordance with the diagram.



Installation and service instructions for the relevant control unit

- (A) To the control unit
- (B) Plug within the mixer motor
- ▲ Mixer open
- ▼ Mixer closed

## Changing the rotational direction (if required)



1. Switch OFF the power supply at the control unit.
2. Undo the casing cover.
3. Disconnect 3-pin plug (A) in the mixer motor.
4. Insert the 3-pin plug in the mixer motor rotated through 180°.
5. Check the rotational direction.

## Specification

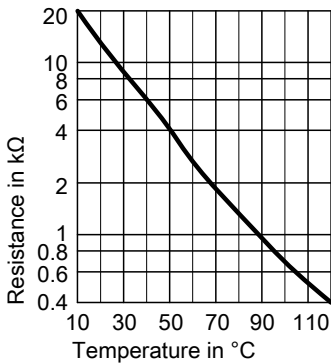
### Mixer motor

Rated voltage	230 V~
Rated frequency	50 Hz
Power consumption	4 W
Protection class	II
IP rating	IP 42 to EN 60 529; ensure through design/installation
Runtime for 90°◁	120 s
Permissible ambient temperature	
■ During operation	0 to +40 °C
■ During storage and transport	-20 to +65 °C

### Flow temperature sensor

Sensor type	NTC 10 kΩ, at 25 °C
IP rating	IP 32 to EN 60 529; ensure through design/installation
Permissible ambient temperature	
■ During operation	0 to + 120 °C
■ During storage and transport	-20 to +70 °C

### Curve





## Declaration of Conformity

We, Viessmann Werke GmbH & Co. KG, D-35107 Allendorf, declare as sole responsible body that the named product complies with the European directives and supplementary national requirements in terms of its design and operational characteristics.

Using the serial number, the full Declaration of Conformity can be found on the following website:

**[www.viessmann.co.uk/eu-conformity](http://www.viessmann.co.uk/eu-conformity)**







Viessmann Werke GmbH & Co. KG  
D-35107 Allendorf  
Telephone: +49 6452 70-0  
Fax: +49 6452 70-2780  
[www.viessmann.com](http://www.viessmann.com)



Viessmann Limited  
Hortonwood 30, Telford  
Shropshire, TF1 7YP, GB  
Telephone: +44 1952 675000  
Fax: +44 1952 675040  
E-mail: [info-uk@viessmann.com](mailto:info-uk@viessmann.com)

5602980 Subject to technical modifications.