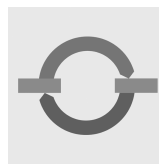


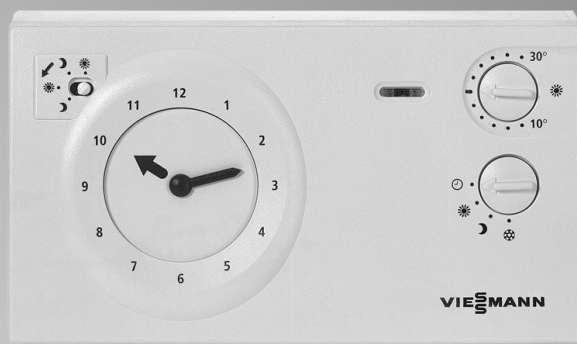
Operating instructions for system users

VIESSMANN

Room thermostat
Type UTA



VITOTROL 100



For your safety



Please follow these safety instructions closely to prevent accidents and material losses.

Safety instructions explained



Danger

This symbol warns against the risk of injury.



Please note

This symbol warns against the risk of material losses and environmental pollution.

Note

Details identified by the word "Note" contain additional information.

Target group

These operating instructions are for the heating system user.



Danger

Incorrectly executed work on the heating system can lead to life-threatening accidents.

- Work on gas appliances must only be carried out by a qualified gas fitter.
- Work on electrical equipment must only be carried out by a qualified electrician.

If you smell gas



Danger

Escaping gas can lead to explosions which may lead to serious injury.

- Never smoke. Prevent naked flames and sparks. Never switch lights or electrical appliances ON or OFF.
- Open windows and doors.
- Close the gas shut-off valve.
- Remove all people from the danger zone.
- Observe the safety regulations of your local gas supplier, found on the gas meter.
- Notify your contractor from outside the building.

If you smell flue gas



Danger

Flue gas can lead to life-threatening poisoning.

- Shut down the heating system.
- Ventilate the boiler room.
- Close all doors leading to the living space.

For your safety (cont.)

In case of fire



Danger

Fire creates the risk of burning and explosions.

- Shut down the heating system.
- Close the shut-off valves of the fuel lines.
- Use a tested fire extinguisher, class ABC.

Ancillary components, spare and wearing parts



Please note

Components which are not tested with the heating system may lead to damage to the heating system, or may compromise their function. Installation or replacement must only be carried out by qualified personnel.

Boiler room requirements



Please note

Incorrect ambient conditions can lead to damage to the heating system and put the safe operation at risk.

- Ensure ambient temperatures above 0 °C and below 35 °C.
- Prevent air contamination by halogenated hydrocarbons (e.g. as contained in paints, solvents or cleaning fluids) and excessive dust (e.g. through grinding/polishing work).
- Avoid continuously high humidity levels (e.g. through frequent drying of washing).
- Never close existing ventilation apertures.

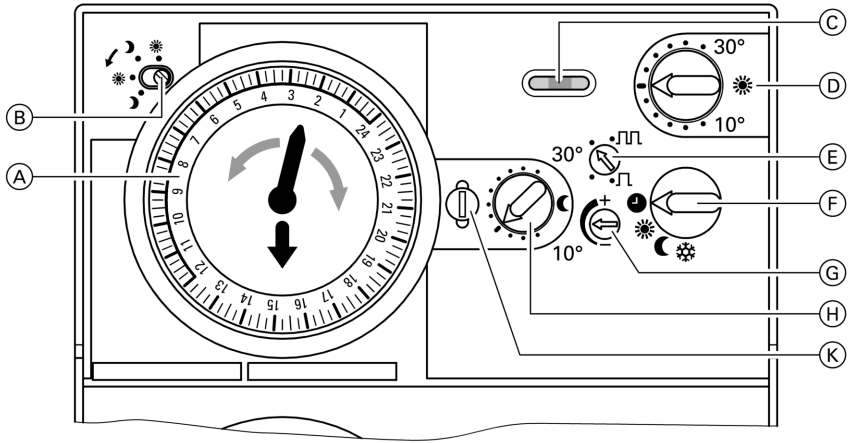
Initial start-up

The initial start-up and matching of the control unit to local conditions and the structural characteristics of the building must be carried out by your heating contractor.

As operator of new combustion equipment, you may be obliged to notify your local flue gas inspector [check local regulations]. Your local flue gas inspector will also inform you [where appropriate] about work he may be required to perform on your combustion equipment (e.g. regular checks, cleaning).

Wait for one hour after the equipment has been connected by your contractor to allow the equipment to adjust itself to its ambient temperature. Then make all required adjustments.

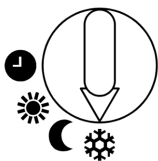
Summary of controls and indicators



- (A) Scale ring with day program
- (B) Switch status display
- (C) Function display (illuminates during heating operation)
- (D) Control thermostat for standard mode
- (E) Controller for electronic feedback (to be set up by your contractor)
- (F) Heating program selector
- (G) Temperature matching controller
- (H) Control thermostat for reduced mode
- (K) Closure for securing the device

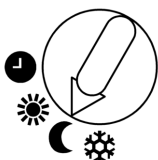
Settings

Selecting a program



☀ "Standby mode"

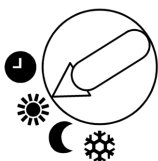
Vitotrol 100 will only start, when the room temperature drops below +6 °C (e.g. to start during the holidays to prevent house plants from dying due to cold).



☾ "Reduced operation"

Constant central heating with reduced room temperature.

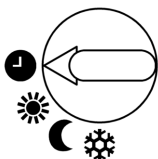
Changing the reduced room temperature see page 7.



☀ "Standard mode"

Constant central heating with standard room temperature.

Changing the standard room temperature see page 6.



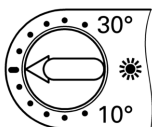
🕒 "Automatic mode"

The central heating switches between standard mode and reduced mode in accordance with the selected day program.

Adjusting the day program, see page 7.

Setting the room temperature

Standard room temperature

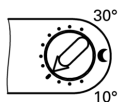


Select the required temperature with the control thermostat for standard mode "☀".

The recommended temperature is 20 °C.

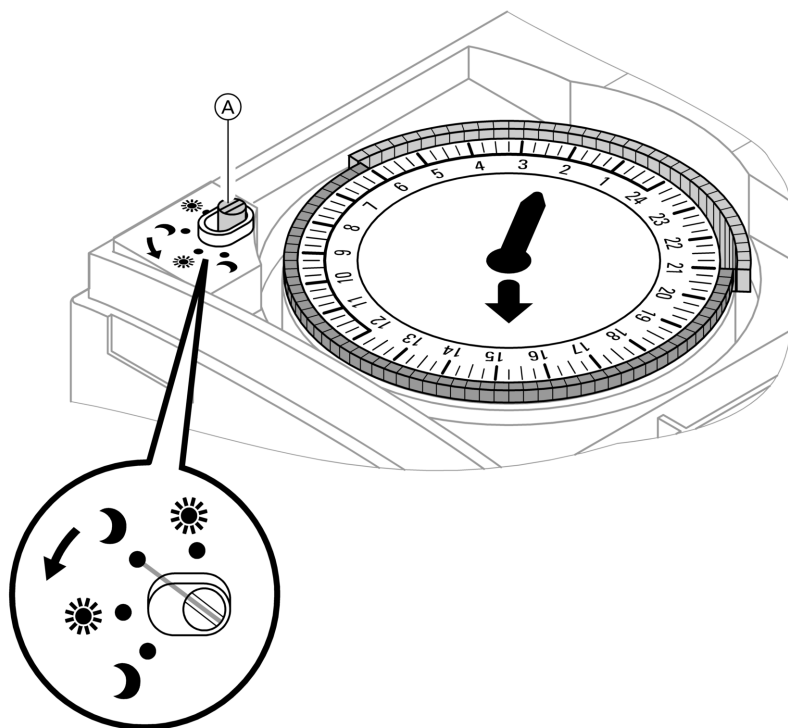
Setting the room temperature (cont.)

Reduced room temperature



Select the required temperature with the thermostat for reduced mode "☾". The recommended temperature is 16 °C.

Creating the day program for automatic mode



1. Open the room thermostat flap.

2. Determine the period for standard mode (e.g. 06:00 h until 21:00 h). Push all tabs for this period **inwards**.



Settings

Creating the day program for automatic mode (cont.)

3. Determine the period for reduced mode (e.g. 21:15 h until 05:45 h). Push all tabs for this period **outwards**.
4. Check, whether all tabs are pushed as far as possible.
5. Close the room thermostat flap and set the time (see page 8).

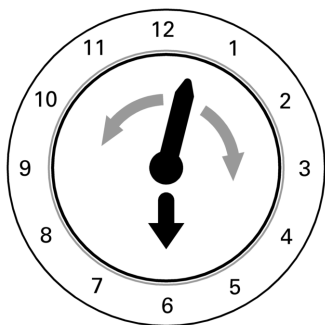
Note

In automatic mode the time switch display ① shows which program is currently enabled.

"☀" "Standard mode

"☾" "Reduced mode

Set the time



Set the time by moving the hand on the dial.

Note

*Reset the clock after a power failure. Moving the hand counterclockwise requires a greater force. This will **not** damage the mechanical parts of the clock.*

Set the summer/winter time

Changing from winter to summer

time (in spring)

Move the hand on one hour.

Changing from summer to winter

time (in autumn)

Move the hand back one hour.

... rooms are too cold

Cause	Remedy
Vitotrol 100 incorrectly adjusted	Check settings and correct, if required: <ul style="list-style-type: none"> ■ Program (see page 6) ■ Room temperature (see page 6) ■ Day program (see page 7) ■ Time (see page 8)
Connected device faulty (e.g. heating circuit pump)	Check the device and notify your contractor, if required

... rooms are too hot

Cause	Remedy
Vitotrol 100 incorrectly adjusted	Check settings and correct, if required: <ul style="list-style-type: none"> ■ Program (see page 6) ■ Room temperature (see page 6) ■ Day program (see page 7) ■ Time (see page 8)

Repairs

Cleaning

All devices may be cleaned with a commercially available domestic cleaning agent (non scouring).

Energy saving tips

Not only will you benefit from the advantages of a modern heating system, but you can also save energy by the way you operate your system. The following steps will help you with this:

- **Correct ventilation/airing.**
Briefly open windows fully and at the same time close the thermostatic radiator valves.
- **Never overheat rooms;**
endeavour to reach a room temperature of 20 °C; every degree of room temperature reduction saves up to 6% of your heating bills.
- **Close roller shutters (where installed) at dusk.**
- **Utilise the remote control options, e.g. standard room temperature alternating with reduced room temperature.**



Applicability

For Vitotrol 100, type UTA,

Part no. 7170 149

Your contact

Contact your local heating contractor if you have any questions regarding the maintenance and repair of your heating system. You may, for example, find local heating contractors on the internet under www.viessmann.com.

Viessmann Werke GmbH&Co KG
D-35107 Allendorf
Telefon: +49 6452 70-0
Telefax: +49 6452 70-2780
www.viessmann.de

Viessmann Limited
Hortonwood 30, Telford
Shropshire, TF1 7YP, GB
Telephone: +44 1952 675000
Fax: +44 1952 675040
E-mail: info-uk@viessmann.com

5592 469 GB Subject to technical modifications.