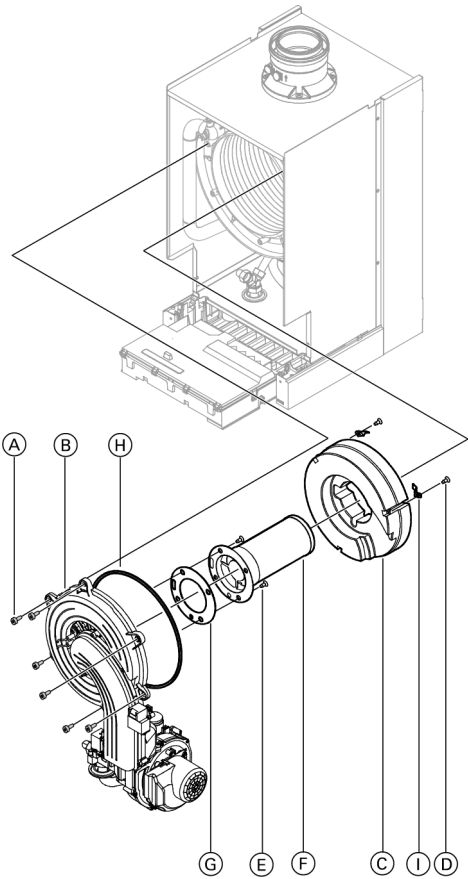


Replacing the Burner Assembly Components



1. Disconnect all electrical connections and ground lead.
2. With gas pipe disconnected, remove the six Torx screws (T-40) (A) and remove the burner mounting flange assembly (B).



CAUTION

To avoid damage to the burner, do not lay burner on its cylindrical burner tube. Failure to heed this caution may cause damage to the burner tube, which may lead to improper operation.

3. Remove three 5mm Allen screws (D) and three clips (I) and remove refractory (C).
4. Remove four Torx screws (T-25) (E) and remove burner tube (F) and gasket (G).
5. Inspect burner mounting flange assembly gasket (H) for damage. Replacing the gasket every 2 years is recommended.
6. Replace parts as required and reassemble as per steps 4 through 1 respectively and torque fasteners as per legend C.
7. See 'Reconnecting the Boiler' to place the boiler back in operation.

Legend C

Tightening torque of fasteners:

- (B) 70.8 lb.in. / 8 Nm
- (D) 31 lb.in. / 3.5 Nm
- (G) 22.1 lb.in. / 3 Nm

Reconnecting the boiler



For more details refer to the *Installation and Start-up/Service Instructions* applicable to this boiler.

1. Install front enclosure panel.
2. Place the boiler back in operation.

Viessmann Manufacturing Company (U.S.) Inc.
45 Access Road
Warwick, Rhode Island • 02886 • USA
1-800-288-0667 • Fax (401) 732-0590
www.viessmann-us.com • info@viessmann-us.com

Viessmann Manufacturing Company Inc.
750 McMurray Road
Waterloo, Ontario • N2V 2G5 • Canada
1-800-387-7373 • Fax (519) 885-0887
www.viessmann.ca • info@viessmann.ca

Printed on environmentally friendly (recycled and recyclable) paper.



Technical information subject to change without notice.

7828 934 RI v1.2

Replacement Instructions

for use by heating contractor

VIESSMANN

Burner Assembly

for Vitodens 200-W, WB2B 80, 105

Safety and Installation Requirements

Please ensure that these instructions are read and understood before starting any service work. Failure to comply with these instructions may cause product/property damage, severe personal injury and/or loss of life.

Working on the equipment

The installation, adjustment, service and maintenance of this product must be performed by a licensed professional heating contractor who is qualified and experienced in the installation, service, and maintenance of hot water boilers. There are no user serviceable parts on the boiler, burner or control.

Ensure that main power to the equipment being serviced is off.

Ensure that the main fuel supply valve to the boiler is closed.

Take precautions to avoid accidental activation of power or fuel during service work.

Do not perform service work on any component part without ensuring safe operation of the heating system. When replacing parts, use original Viessmann or Viessmann approved replacement parts.



Refer to the *Installation and Start-up/Service Instructions* applicable to this boiler.

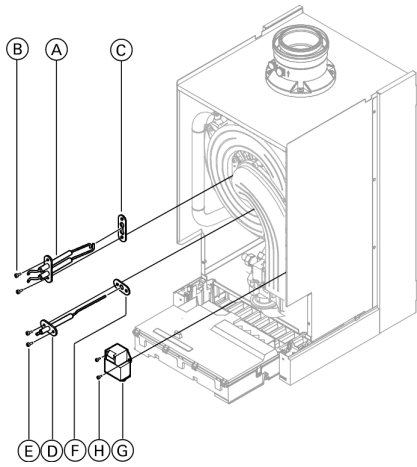
Accessing the Burner Assembly



For more details refer to the *Installation and Start-up/Service Instructions* applicable to this boiler.

1. With the electrical power and fuel supply off, open the control cover and switch the ON/OFF "ⓘ" boiler control switch to OFF.
2. Remove the front enclosure panel.

Replacing the Electrodes and Transformer



Legend A

Tightening torque of fasteners:

- B 40 lb.in. / 4.5 Nm
- E 40 lb.in. / 4.5 Nm
- H 13.2 lb.in. / 1.5 Nm

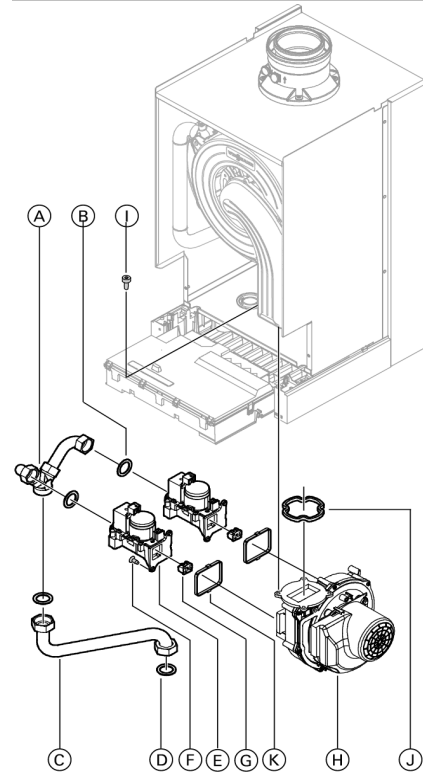
1. Disconnect the cables from the, ignition electrode (A), ionization electrode (D) and/or ignition transformer (G).
2. To replace the following:
 - Remove two 4mm Allen screws (B) and remove ignition electrode (A) and gasket (C).
 - Remove two 4mm Allen screws (E) and remove ionization electrode (D) and gasket (F).
 - Remove two 4mm Allen screws (H) and remove ignition transformer (G).



Refer to Start-up/Service Instructions to check and adjust ignition and ionization electrodes.

3. Replace parts as required and reassemble as per steps 2 and 1 respectively and torque fasteners as per legend A.
4. See 'Reconnecting the Boiler' to place the boiler back in operation.

Replacing the Burner Assembly Components

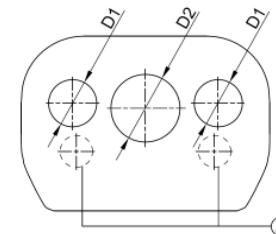


Legend B

Tightening torque of fasteners:

- C 16.2 lb.ft / 22 Nm
- F 35 lb.in. / 4 Nm
- I 44 lb.in. / 5 Nm

Identification of the Fixed Gas Orifice



WB2B Boiler Size 80, 105	
Colour	grey
Stamped No. (A)	0 9
D1	3.90 mm
D2	5.20 mm



WARNING

Gas leaks can lead to explosions. Check the gas pipe seals to ensure that there are no leaks.

1. Remove the gas distribution pipe (A) and two gaskets (B).
2. Loosen and remove the gas connection pipe (C) and two gaskets (D).
3. Remove the four 4mm Allen screws (F) and remove gas valves (E). Inspect gas valve gaskets (K) and replace if necessary.
4. Inspect and replace fixed gas orifices (G) if necessary. To remove use pliers.

Note:
Refer to 'Identification of the Fixed Gas Orifice' Chart.
5. Remove two 5mm Hex screws (I) to remove radial fan assembly (H) and gasket (J).

IMPORTANT

Use new gaskets and o-rings on all connections

6. Replace parts as required and reassemble as per steps 5 through 1 respectively and torque fasteners as per legend B.
7. See 'Reconnecting the Boiler' to place the boiler back in operation.



Refer to Installation and Start-up/Service Instructions applicable to this boiler.