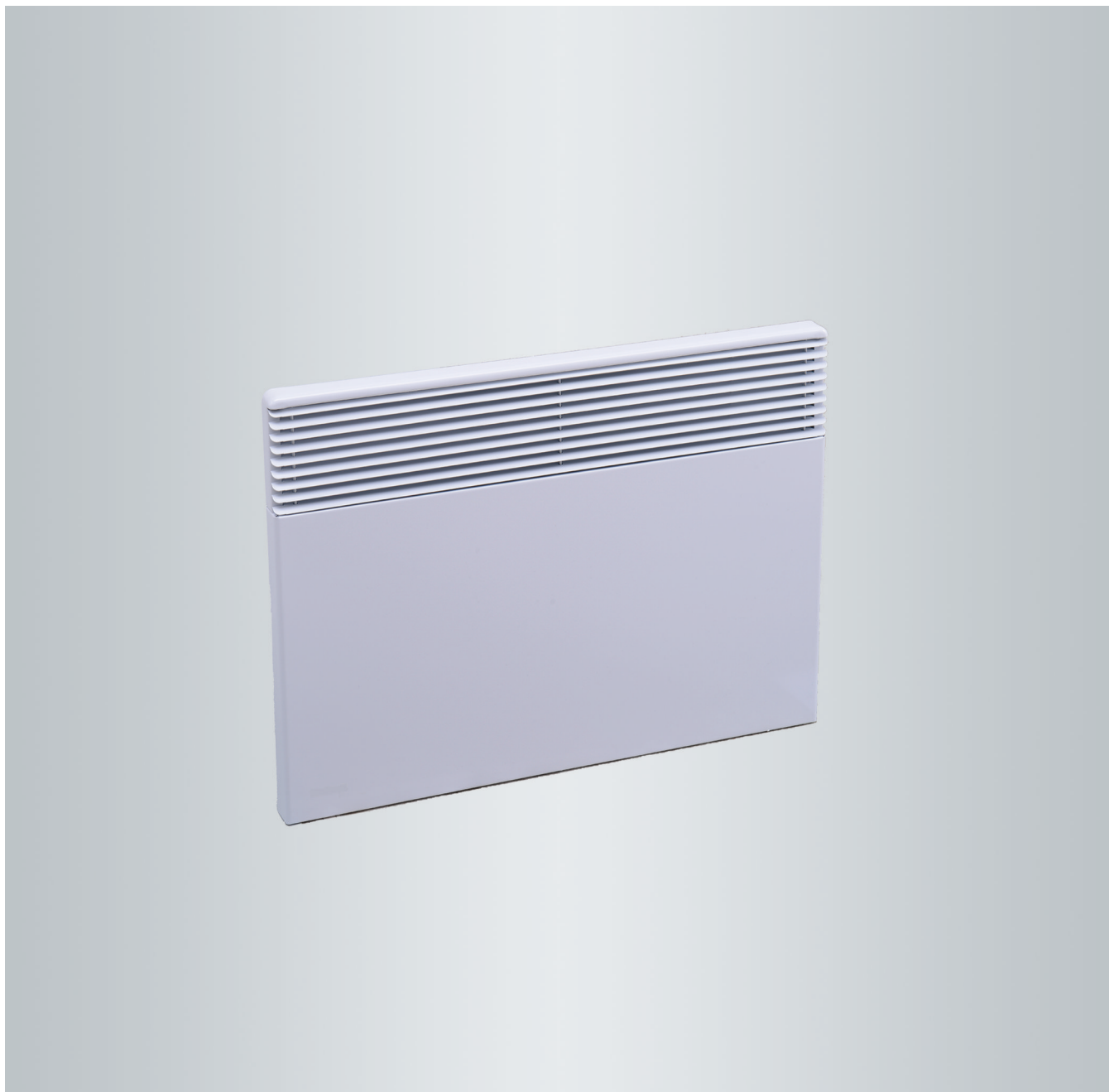


Operating instructions for the system user



Direct electric heating for rapid heating of living spaces

VITOPLANAR EC4



Safety instructions

Safety instructions



Please follow these safety instructions closely to prevent accidents and material losses.

Safety instructions explained



Danger

This symbol warns against the risk of injury.



Please note

This symbol warns against the risk of material losses and environmental pollution.

Note

Details identified by the word "Note" contain additional information.

Target group

These operating instructions are intended for users of the appliance.

This appliance can also be operated by children aged 8 and older, as well as by individuals with reduced physical, sensory or mental faculties or those lacking in experience and knowledge, provided such individuals are supervised or have been instructed in the safe use of this appliance and any risks arising from it.

Keep children younger than the age of 3 away from the appliance. Children between the ages of 3 and 8 may only switch the appliance on and off if they are supervised or have been instructed in the safe use of the appliance and have understood the resulting risks, provided that the appliance is placed or installed in its normal position of use. Children between the ages of 3 and 8 must not plug the appliance into a wall socket, regulate the appliance, clean the appliance or carry out maintenance.



Please note

Supervise children in the proximity of the appliance.

- Never permit children to play with the appliance.
- Cleaning and user maintenance must never be carried out by unsupervised children.



Danger

Incorrectly executed work on the appliance can lead to life threatening accidents.

Work on electrical equipment may only be carried out by a qualified electrician.

If there is a fire



Danger

Failure to observe the operating instructions may result in a fire hazard.

The appliance must not be used in small rooms inhabited by persons who cannot leave the room independently, unless constant monitoring is ensured.

Installation room requirements



Please note


Impermissible ambient conditions can lead to damage to the appliance (risk of overheating) and to a fire hazard.


- Do not use the appliance in the immediate vicinity of a bathtub, shower or swimming pool.
- Do not install the appliance directly below a wall socket.
- The appliance must not be used in small rooms inhabited by persons who cannot leave the room independently, unless constant monitoring is ensured.

Safety instructions (cont.)**Auxiliary components, spare and wearing parts**

- !** **Please note**
Components that were not tested with the appliance may cause appliance damage, or may affect its functions.
Installation or replacement work must only be carried out by a qualified contractor.

Information on operation



-  **Danger**
If the surface of the appliance or the power cable with the ON/OFF switch is damaged, there is a risk of burns or electric shock.
The appliance must not be operated if damaged.
Switch off the appliance, unplug the standard plug (if present) from the socket and notify a qualified contractor.

-  **Danger**
The surface of the appliance can become very hot and cause burns if prolonged contact is made.
Do not leave children or vulnerable persons unattended near the appliance.

- !** **Please note**
Impermissible use may result in damage to the appliance (risk of overheating) and fire.
- **Do not cover the appliance, even partially, e.g. with a towel.**
 - **Do not dry any objects on the appliance.**
 - Do not expose the appliance to mechanical loads:
 - No persons should lean against it
 - No objects, e.g. furniture, should be leant against it

1. Introductory information	Symbols	5
	Intended use	5
	Product information	5
	Permissible ambient conditions	6
	■ Clearance dimensions	6
	Commissioning	6
	■ Commissioning the appliance	6
2. Operation	Summary of controls and indicators	7
	How to use the controls	7
	■ Locking the buttons	7
	■ Unlocking the buttons	7
3. Start-up/shutdown	Switching the appliance on	8
	Switching the appliance off	8
4. Room heating	Selecting the operating mode	9
	Setting the room temperature	9
	Setting the temperature for reduced mode	9
	Day programs	9
	■ Selecting the day program for each day of the week	9
5. Further adjustments	"Open window" function	11
	Setting the day and time	11
6. What to do if...	Appliance does not heat	12
	Radiated heat is insufficient	12
7. Maintenance	Maintenance	13
	Cleaning	13
8. Appendix	Information on disposal	14
	■ Disposal of packaging	14
	■ Final decommissioning and disposal of the heater	14

Symbols

Symbol	Meaning
	Reference to another document containing further information
	Warning of material losses and environmental pollution

Intended use

The appliance is a direct heater suitable for a variety of application scenarios.

The appliance is equipped with an ON/OFF switch and a temperature controller, and is therefore also suitable as a frost protection appliance.

It is intended exclusively for room heating.

Usage for a purpose other than room heating shall be deemed inappropriate.

Intended use presupposes that a permanent installation in conjunction with permissible components designed for this purpose has been carried out.

All other use is deemed inappropriate. Any resulting losses are excluded from the manufacturer's liability.

Any usage beyond this must be approved by the manufacturer in each individual case.

Intended use also includes adherence to maintenance and inspection intervals.

Product information

Vitoplanar EC4

Type	Output in kW
EC4.A500S	0.5
EC4.A1000S	1
EC4.A1500S	1.5
EC4.A2000S	2

Wall convector, pure white

- Electric direct heater for rapid heating of living spaces such as cellars, toilets, bedrooms, bathrooms and hobby rooms.
- The version is also suitable for bathrooms, as all appliances are splashproof.
- The specially shaped air discharge grille ensures that the heated air is discharged evenly and thus creates natural convection in the room.
- In addition, the heating element has a comparatively low surface temperature, which reduces the transport of dust.

- The electronic controller ensures that the required temperature is maintained.
- The room temperature can be reduced by 3 K via an external time switch.
- Connecting cable: 1.5 m, 2-pole + control cable
- Control range: 7 - 27 °C
- IP rating: IP 24
- Protection class: II
- Colour: Pure white
- Test mark: VDE, CE compliant.

Note

The product data corresponds to the EU regulations of the directive on the environmentally sound design of energy related products (ErP).

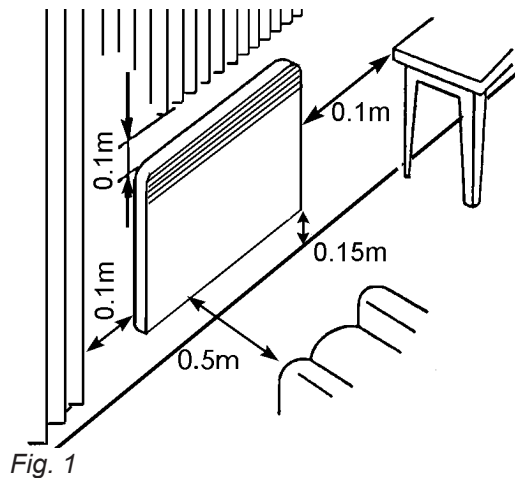
Permissible ambient conditions

Clearance dimensions

- ! Please note**
If the appliance is operated without maintaining the minimum clearances, flammable objects may catch fire. Observe the specified minimum clearances.

For safety reasons, the following minimum clearances from furniture and flammable objects must be observed:

- 10 cm from the top cover
- 10 cm from the side panels
- 15 cm from the floor
- 50 cm from the front (warm air discharge)
- The wall mounting bracket ensures a clearance of 22 mm at the back



Commissioning

Commissioning the appliance

- ! Please note**
The surfaces of the appliance heat up during operation! Touching them can cause burns. Fully or partially covering the appliance can lead to a fire hazard.
Do not cover the air intake or discharge apertures of the appliance in whole or in part with towels, net curtains, curtains, etc. or block them with objects.
Do not touch the grille! Keep small children away from the appliance!

- ! Please note**
If the appliance is operated without being installed correctly, it may be damaged.
The appliance may only be operated when installed correctly.

Switch on the appliance.



Danger

If the surface of the appliance or the power cable is damaged, there is a risk of burns or electric shock.
The appliance must not be operated if damaged.
Switch off the appliance and notify a qualified contractor.

Summary of controls and indicators

The controls are located at the top right.

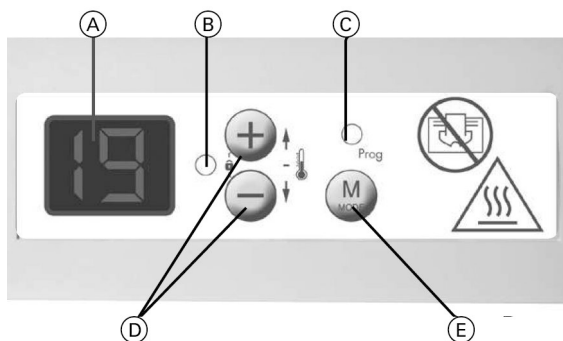


Fig. 2

- (A) Display
- (B) "Heating mode" LED
- (C) "Prog" LED
- (D) + Increase temperature button/next
- Decrease temperature button/back
- (E) (M) **MODE** Operating mode button/confirm



Fig. 3 ON/OFF switch

- 1 Heating
- ⊙ No heating

Note

The ON/OFF switch does **not** disconnect the appliance from the power supply.

How to use the controls

Locking the buttons

Press ⊕ and ⊖ simultaneously.
"EC" flashes. The buttons are locked.

Note

If a button is pressed, "FF" is displayed.

Unlocking the buttons

Press ⊕ and ⊖ simultaneously.

Switching the appliance on



Danger

If the surface of the appliance or the power cable with the ON/OFF switch is damaged, there is a risk of burns or electric shock.

The appliance must not be operated if damaged. Switch off the appliance and notify a qualified contractor.

Turn on the appliance at the ON/OFF switch (switch position **1**). Then select the operating mode; see chapter "Selecting the operating mode".

The appliance is ready for operation.

Switching the appliance off

Turn off the appliance at the ON/OFF switch (switch position **0**).

Note

*The ON/OFF switch does **not** disconnect the appliance from the power supply.*

Selecting the operating mode

Operating modes

Operating mode	Display	Meaning
Standard mode	Set temperature	Heating with the set temperature
Reduced mode	"EC"	Heating with temperature reduced by 3 °C
Frost protection	"HG"	Heating with approx. 7 °C
Program	"Prog" LED lights up	Heating phases are switched over by day programs or by an external time switch. See "Day programs"
Off	"- -"	No heating

Press **MODE** repeatedly until the required operating mode is displayed.

Setting the room temperature

Use **+**/**-** to select the required temperature.

Setting the temperature for reduced mode

- Press **MODE** repeatedly until "EC" is displayed.
- Press **MODE** for 3 seconds. "EC" flashes.
- Use **+**/**-** to select the required temperature.
- Confirm with **MODE**.

Note

To display the reduced temperature, briefly press **+** or **-**.

Day programs

There are 3 fixed day programs "P1" to "P3", where you can switch between reduced mode and standard mode.

The fourth program "FP" is selected if the changeover is to be carried out by an external time switch.

Display	Standard mode
"P1"	<ul style="list-style-type: none"> ▪ 6:00 to 8:00 ▪ 17:00 to 23:00
"P2"	<ul style="list-style-type: none"> ▪ 6:00 to 8:00 ▪ 11:30 to 13:30 ▪ 17:00 to 23:00
"P3"	<ul style="list-style-type: none"> ▪ 8:00 to 23:00
"FP"	Changeover by an external time switch

Selecting the day program for each day of the week

Note

After more than one hour without power, the settings must be made again.

Note

During commissioning, the day and time must be set before making these settings. See "Setting the day and time".

Room heating

Day programs (cont.)

How the days of the week are shown

"LU" Monday

"MA" Tuesday

"ME" Wednesday

"JE" Thursday

"UE" Friday

"SA" Saturday

"di" Sunday

1. Press **M**MODE repeatedly until the "Prog" LED lights up.
2. Press **M**MODE for 3 seconds.
Programming mode is activated.

3. Use \oplus/\ominus to select the required day program.
4. Confirm with **M**MODE.
5. Repeat steps 3 and 4 for the other days.

Note

If no button is pressed for 15 seconds, the programming unit returns to the temperature display.

"Open window" function

This function stops heating mode automatically if a sudden drop in temperature is detected. "FE" is displayed.

To reactivate heating mode, press **M**MODE.

Activating/deactivating the function

Press **M**MODE for 10 seconds.

"F0" Function deactivated

"F1" Function activated

Setting the day and time

Note

After more than one hour without power, the settings must be made again.

1. Press **M**MODE repeatedly until the "Prog" LED lights up.
2. Press **M**MODE for 3 seconds.
The day is displayed.
3. Use **+**/**-** to select the current day.
4. Confirm with **M**MODE.
The hour is displayed.
5. Use **+**/**-** to select the current hour.
6. Confirm with **M**MODE.
The minutes are displayed.
7. Use **+**/**-** to select the current minutes.
8. Confirm with **M**MODE.

What to do if...

Appliance does not heat

Cause	Remedy
Appliance is switched off.	Switch the appliance on.
Set temperature on the room thermostat is lower than the actual temperature in the room.	Change the set temperature on the room thermostat.
Standard mode is not activated.	Select the operating mode.
Fuse has blown or is faulty.	Check fuse in domestic distribution board.

Radiated heat is insufficient

Cause	Remedy
Objects between heater and person are obstructing radiation.	Remove objects between heater and person.
Distance between heater and person too great.	Reduce distance to the heater.
Appliance size is too small.	Select appliance with higher output.

Maintenance

The heater is maintenance-free.

Cleaning

**Please note**

If the appliance is cleaned while hot, it may be damaged.
Allow the heater to cool down completely before cleaning.

**Please note**

Incorrect cleaning agents (e.g. scouring agents) may damage the surfaces of the appliance.
Only use suitable cleaners to clean the surfaces.

Clean the surfaces with a suitable cleaner.

Information on disposal

Disposal of packaging

Your contractor will dispose of the packaging from your Viessmann product.

DE: Packaging waste is channelled for recycling to a certified disposal contractor in line with statutory regulations.

AT: Packaging waste is channelled for recycling to a certified disposal contractor in line with statutory regulations. Use the ARA statutory disposal system (Altstoff Recycling Austria AG, licence number 5766).

Final decommissioning and disposal of the heater

Viessmann products can be recycled. The heater does not belong in the household waste.

Speak to your contractor about the correct disposal of your old system.

421AA4912.A00



Your contact

Contact your local contractor if you have any questions about your system or wish to arrange maintenance or repair work. You can find local contractors on the internet at www.viessmann.de.



Viessmann Werke GmbH & Co. KG
D-35107 Allendorf
Telephone: +49 6452 70-0
Fax: +49 6452 70-2780
www.viessmann.com

Viessmann Limited
Hortonwood 30, Telford
Shropshire, TF1 7YP, GB
Telephone: +44 1952 675000
Fax: +44 1952 675040
E-mail: info-uk@viessmann.com

5855582 Subject to technical modifications.