

# CS-11 LCD 7-Day 5+2 Programmable Digital Thermostat

## Buttons and LCD display

Buttons	Short press	Press > 5 seconds	Symbol	Description
	Turning on/off thermostat		AUTO	Auto mode(use button M to select)
	Auto/Manual mode selection	Menu button( when thermostat is turned off) Program button( when thermostat is turned on)		Manual mode(use button M to select)
	Set the time and week days Confirm settings	Cancel override( when in override mode)		Vacation mode
	Increase the set value	Bring up vacation mode		Temporary temperature override
	Decrease the set value	Check floor temperature (AF model only)		Frost protection activated
	Lock /unlock buttons		SET AT	Set temperature
		Reset to factory settings (when thermostat is turned off)	Program 1,2, 3,4,5,6	The program number
				The buttons are locked.
				Displays when heating is active

## Turning ON/OFF Your Thermostat

Press button to turn the thermostat ON or OFF. When thermostat is turned off, LCD will display OFF.

## Configuration Menu

This thermostat is full of useful features which can be set quite easily through the feature configuration menu. To access the feature configuration menu, simply turn off your thermostat and hold button M for 5 seconds. Now you can see Menu 1, to proceed to other menu, press button M again. To exit menu, press button

Menu #	Feature Description	Factory Default Feature Value	Press  or  to select
1	Sensor selection. This thermostat is a combination model allowing you to choose between 4 different models. (A, AF,F ) A model: air only, with built in sensor AF model: air & floor , with both built in and remote sensor F model: floor only, with remote sensor	A	A / AF / F
2	Switching differential. The number of degrees difference between switching off at the set temperature and on again to reach the set temperature.The default is 1°C which means the thermostat will switch the heating on 0.5°C below the set temperature and will turn it off 0.5°C above the set temperature. With a 2°C differential, the heating will switch on 1°C below the set temperature and switch off 1°C above the set temperature.	1°C	1°C ~ 5°C
3	Calibrate the room temperature. This feature is used to compensate for any difference between the displayed room temperature and a thermometer.	0°C	-5°C ~ +5°C
4	Calibrate the floor temperature. This feature is used to compensate for any difference between the displayed floor temperature and a thermometer.	0°C	-5°C ~ +5°C
5	Pump protection(for hydronic heating only). In hydronic heating installations, it is recommended to activate the pump at least 15 seconds every 24 hours in order to avoid any seizing. Select ON to activate this feature, OFF to deactivate. When the thermostat is activating the pump, the  icon will blink.	OFF	ON / OFF
6	Optimum start(preheat). This feature is to ensure that the required temperature has already been reached when you get up in the morning or come home from work.	OFF	ON / OFF
7	Set the floor temperature limit. This feature is to protect the floor surface.	40 °C	20°C ~ 40 °C
8	Set backlight turning-on time. Selecting on will turn the light on continuously. Selecting off will turn the light off. Selecting 20 seconds will turn the light on for 20 seconds.	20 seconds	20 seconds / ON /OFF
9	Select temperature format °C or °F.	°C	°C / °F
10	Select 12 / 24 hour clock	24	12 / 24
11	Frost protection. This feature is to avoid room temperature going below 5°C	OFF	ON / OFF
12	Program type selection. This gives user 3 options of program type. <b>5_2 will give you 5 days(Monday to Friday) with the same six events(Wakeup, out, home, out, home,sleep) and 2 days(Saturday and Sunday) with the same six events.</b> <b>6_1 will give you 6 days(Monday to Saturday) with the same six events(Wakeup, out, home, out,home,sleep) and 1 day(Sunday) with the same six events.</b> <b>7_0 will give you individual settings for each day from Monday to Sunday.</b>	7_0	5_2 / 6_1 / 7_0

### Error Message



E0 = The internal sensor has developed a fault. You should contact your thermostat retailer for assistance.  
E1 = The remote floor sensor has not been connected, has been wired incorrectly or the probe is faulty.  
LO = The room or floor temperature is below 0 °C  
HI = The room or floor temperature is above 50 °C

This product should be installed by a qualified electrician.

See overleaf for further setting up information

# CS-11 LCD 7-Day 5+2 Programmable Digital Thermostat

## Auto / Manual Mode

Press button M to select Auto/Manual mode. In Manual mode, the thermostat maintains a constant set temperature manually set by the user. In Auto mode, the thermostat executes the preprogrammed schedules. To adjust these schedules, follow the easy steps below,

## Program your thermostat

- Press and hold button M for 5 seconds until "Program" is shown with the Day flashing. Use up or down button adjust the day (hold up or down button for 5 seconds to set all days the same).
- Press button M to bring up the program 1. Use up or down button to set the start time (default 06:30).(Hold up or down button to change by 15 minutes each time.)
- Press button M again and use up or down button to set the desired temperature to be maintained for program 1.(default 21 °C)

Repeat 2 and 3 until you finish the settings for 6 programmes. Press button M to accept and exit.

The below is the default factory settings for the 6 programmes.

Programme	Start time	Setpoint
1	06:30	21°C
2	08:30	16°C
3	11:30	16°C
4	13:00	16°C
5	16:30	21°C
6	22:30	16°C

Note: It is faster to program the same schedule for the entire week and then to adjust the exceptional days.

- To skip program 3 and 4, simply adjust the set temperature for program 3 and 4 to the same set temperature as program 2.
- To skip program 2 ,3,4,5 for Saturday and Sunday, simply adjust the set temperature for program 2 ,3,4,5 to the same set temperature as program 1.

## Set the Time and Day

This thermostat is fitted with a real time clock. It is essential that the clock time and day are set accurately if you require your programmed events to start on time. Follow the below easy steps,

- Step 1. Press the button once and the time will flash
- Step 2. Use up or down button to change the time (Hold up or down button to change by 15 minutes each time.)
- Step 3. Press button again, the day of the week will flash
- Step 4. Use up or down button to change the day of the week
- Step 5. Press button again to accept and exit

## Resetting factory defaults

Your thermostat has the ability to reset all settings to the factory defaults. If you are certain you want to do this: In standby mode(when thermostat is turned off), press and hold button M and for 5 seconds until "RES" is shown for 5 seconds on LCD.

## Lock the buttons

To lock the buttons, press and hold the up and down buttons for 5 seconds until you see a lock icon appearing, to unlock, repeat the steps above.

## View floor temperature

If thermostat is set in AF model, press and hold the down button for 5 seconds, floor temperature will show and it will automatically revert back to room temperature in 5 seconds.

## Temporary temperature override

To temporary override the current set temperature,

1. Press up or down button once, the set temperature starts flashing
2. Press up or down button again until the temperature you want is displayed
3. Press to confirm the setting with "Temporary" shown on LCD

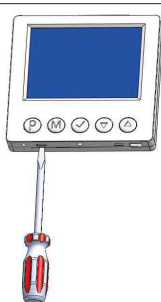
Now your thermostat will override the current programming and maintain the new set temperature until the next program period begins. To cancel the override setting, press and hold button for 5 seconds until "Temporary" disappears.

## Vacation mode

To set vacation mode press and hold the up button for 5 seconds until appears. Use same procedure to exit this mode. Vacation mode will maintain a set temperature(default 10°C) all the time. Press up or down button to change the set point and wait for 5 seconds to accept and exit.

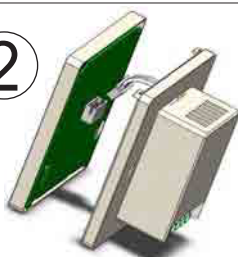
## Installation and Wiring

1



Carefully separate the front half of the thermostat from the back plate by placing a small flat head terminal driver into the slots on the bottom face of the thermostat

2



Carefully unplug the ribbon connector which is plugged in to the front half of the thermostat

3



Place the thermostat front half somewhere safe. Terminate the thermostat as shown in the diagrams below

4



Screw the thermostat back plate on to the back box

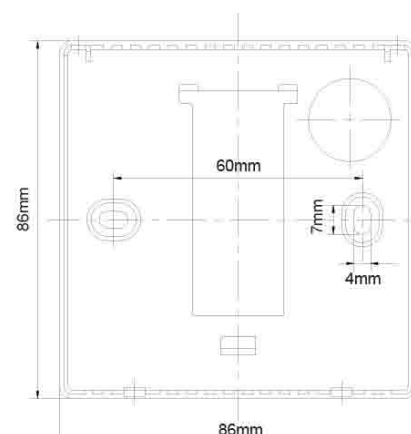
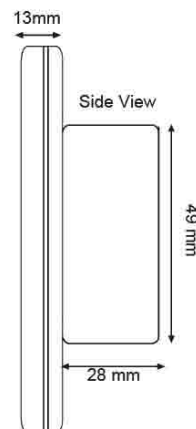
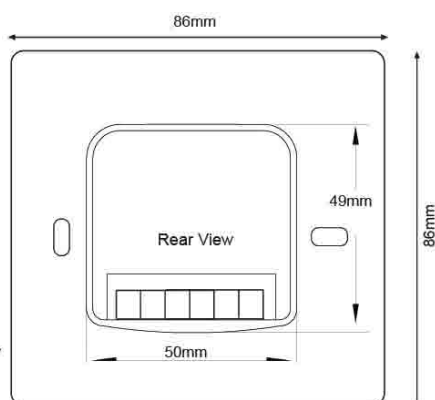
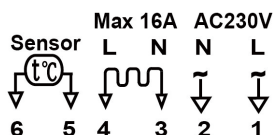
5



Re-connect the thermostat ribbon cable and clip the two halves together

## Wiring Diagram

## Dimensions



This product should be installed by a qualified electrician.