

Gas train replacement

Safety instructions



Please follow these safety instructions closely to prevent accidents and material losses.

Safety instructions explained



Danger

This symbol warns against the risk of injury.

When using gas as fuel, also close the main gas shut-off valve and safeguard against unauthorised reopening.

Note

Details identified by the word "Note" contain additional information.

Repairing components which fulfil a safety function can compromise the safe operation of your heating system. For replacements, use only original spare parts supplied or approved by Viessmann.

Installation, initial start-up, inspection, maintenance and repairs must only be carried out by a competent person (heating engineer/installation contractor).

Before working on the equipment/heating system, isolate the power supply (e.g. by removing a separate mains fuse or by means of a mains isolator) and safeguard against unauthorised reconnection.

Application

Gas train with 20 V operating voltage:

- Vitodens 200, type WB2
- Vitodens 222, type WS2

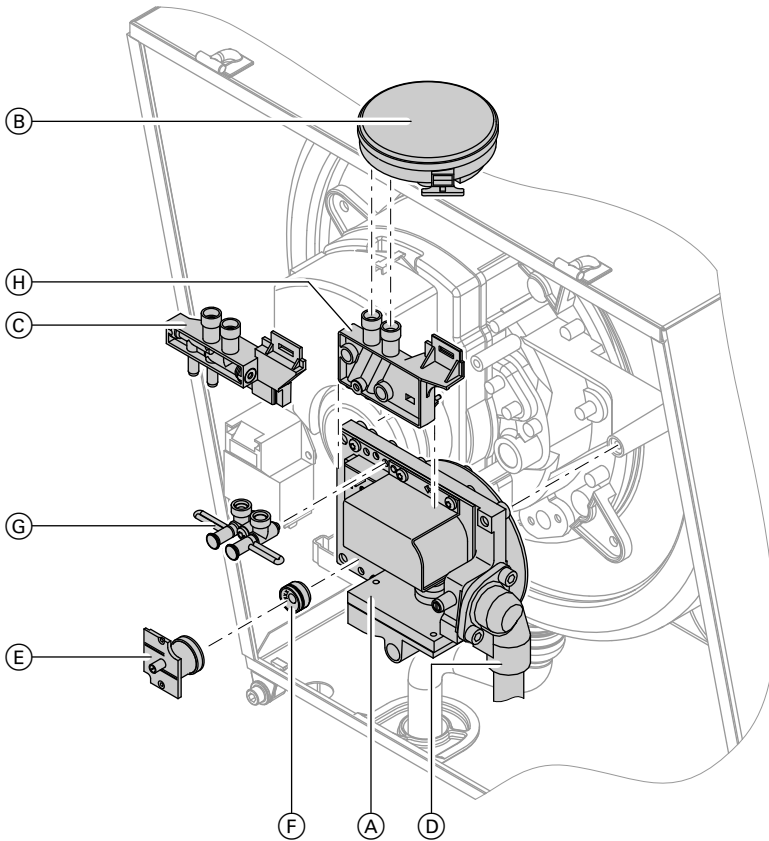
Gas train with 230 V operating voltage:

- Vitodens 300, type WB3A
- Vitodens 333, type WS3A

Replacing the gas train

Note

The new gas train is not provided with a gas restrictor. Remove the gas restrictor from the gas train being replaced or from the conversion kit and install it in the new gas train.



1. Remove front panel and cover.
2. Disconnect power cables/leads from gas train (A) and differential pressure sensor (B).
3. Remove differential pressure sensor (B) and (if installed) differential pressure sensor adaptor (C) from gas train (A) by pulling them upwards.
4. Undo the two screws from inlet-side flange (D).

Replacing the gas train (cont.)

5. Undo the three screws from gas train (A).
6. Remove gas train (A) by pulling it forwards.
7. Undo gas restrictor retainer (E) from old gas train (A), remove gas restrictor (F) and insert in gas restrictor retainer (E) on new gas train (A).
8. Only for Vitodens 300 to 35 kW and Vitodens 333:
Undo connection adaptor (G) from new gas train (A) and fit new differential pressure sensor adaptor (H) to new gas train (A).
9. Check whether the O-rings have been inserted into the openings of connection adaptor (G) or differential pressure sensor adaptor (H).
10. Connect differential pressure sensor (B) to new gas train (A) (click into place).
11. Check whether the outlet-side gasket is fitted to new gas train (A).
12. Secure gas train (A) to burner (torque 5 Nm).
13. Fit flange (D) (torque 5 Nm).
14. Connect the power cables to gas train (A) and differential pressure sensor (B).
15. Start the boiler and check it is working correctly.



Danger

Escaping gas leads to a risk of explosion.

Check all gas connections for tightness.

16. Fit front panel and cover.



Viessmann Werke GmbH & Co. KG
D-35107 Allendorf
Telephone: +49 6452 70-0
Fax: +49 6452 70-2780
www.viessmann.com



Viessmann Limited
Hortonwood 30, Telford
Shropshire, TF1 7YP, GB
Telephone: +44 1952 675000
Fax: +44 1952 675040
E-mail: info-uk@viessmann.com

5492918 Subject to technical modifications.