

Vitoplanar EC4
Type EC4.A500S to EC4.A2000S
Wall convector, 0.5 to 2 kW

Direct electric heating for rapid heating of living spaces

VITOPLANAR EC4



Safety instructions



Please follow these safety instructions closely to prevent accidents and material losses.

Safety instructions explained



Danger

This symbol warns against the risk of injury.



Please note

This symbol warns against the risk of material losses and environmental pollution.

Note

Details identified by the word "Note" contain additional information.

Target group

These instructions are exclusively intended for qualified contractors. Installation and commissioning as well as repairs and service work may only be carried out by a licensed contractor or a qualified person in compliance with all safety regulations. This person must first check whether the electrical system in the building complies with the applicable standards. The manufacturer's responsibility is limited to the delivery of the appliance.

This appliance can also be operated by children aged 8 and older, as well as by individuals with reduced physical, sensory or mental faculties or those lacking in experience and knowledge, provided such individuals are supervised or have been instructed in the safe use of this appliance and any risks arising from it.

Regulations to be observed

- National installation regulations
- Statutory regulations for the prevention of accidents
- Statutory regulations for environmental protection
- Codes of practice of the relevant trade associations
- All current safety regulations as defined by DIN, EN, DVGW, TRGI, TRF, VDE and all locally applicable standards
 - Ⓐ ÖNORM, EN, ÖVGW G K directives, ÖVGW-TRF and ÖVE
 - Ⓒ SEV, SUVA, SVGW, SVTI, SWKI, VKF and EKAS guideline 1942

Work on the appliance

- Work on electrical equipment may only be carried out by a qualified electrician.
- Only connect appliances to correctly installed sockets.
- When working on the appliance, disconnect the mains plug.
- Isolate the appliance from the power supply (e.g. by removing the separate fuse or by means of a mains isolator) and check that it is no longer live.
- Safeguard the appliance against reconnection.



Danger

Hot surfaces on the appliance can cause burns. Before maintenance and service work, switch off the appliance and let it cool down.

Operation of the appliance



Danger

Damaged equipment poses a safety hazard. Check the appliance for external damage. Never start up a damaged appliance.

Safety instructions (cont.)

- The appliance may only be operated in its original condition without modifications and in perfect technical condition. All protection equipment must work faultlessly and be freely accessible.
 - To prevent the appliance overheating, do not cover it.
 - Children younger than the age of 3 must be kept away from the appliance unless they are constantly supervised. Children between the ages of 3 and 8 may only switch the appliance on and off if they are supervised or have been instructed in the safe use of the appliance and have understood the resulting risks, provided that the appliance is placed or installed in its normal position of use. Children between the ages of 3 and 8 must not plug the appliance into a wall socket, regulate the appliance, clean the appliance or carry out maintenance.
 - The appliance may only be commissioned once it has been installed.
 - The appliance must not be used in small rooms inhabited by persons who cannot leave the room independently, unless constant monitoring is ensured.
- ! Please note**
- Impermissible use may result in damage to the appliance (risk of overheating) and fire.
 - Do not cover the appliance, even partially, e.g. with a towel.
 - Do not dry any objects on the appliance.
 - Do not expose the appliance to mechanical loads:
 - No persons should lean against it
 - No objects, e.g. furniture, should be leant against it

Auxiliary components and individual parts

For replacement, use only spare parts supplied or approved by Viessmann.

Disposal of packaging



Please dispose of packaging waste in line with statutory regulations.

DE: Use the disposal system organised by Viessmann.

AT: Use the ARA statutory disposal system (Altstoff Recycling Austria AG, licence number 5766).

CH: Packaging waste is disposed of by the HVAC contractor.

Symbols

Symbol	Meaning
	Reference to another document containing further information
	Warning of material losses and environmental pollution

Intended use

The appliance is a direct heater suitable for a variety of application scenarios.

The appliance is equipped with an ON/OFF switch and a temperature controller, and is therefore also suitable as a frost protection appliance.

It is intended exclusively for room heating.

Usage for a purpose other than room heating shall be deemed inappropriate.

Intended use presupposes that a permanent installation in conjunction with permissible components designed for this purpose has been carried out.

All other use is deemed inappropriate. Any resulting losses are excluded from the manufacturer's liability.

Any usage beyond this must be approved by the manufacturer in each individual case.

Intended use also includes adherence to maintenance and inspection intervals.

Product information

Vitoplanar EC4

Type	Output in kW
EC4.A500S	0.5
EC4.A1000S	1
EC4.A1500S	1.5
EC4.A2000S	2

Wall convector

- Electric direct heater for rapid heating of living spaces such as cellars, toilets, bedrooms, bathrooms and hobby rooms.
- The version is also suitable for bathrooms, as all appliances are splashproof.

- The specially shaped air discharge grille ensures that the heated air is discharged evenly and thus creates natural convection in the room.
- In addition, the heating element has a comparatively low surface temperature, which reduces the transport of dust.
- The electronic controller ensures that the required temperature is maintained.
- The room temperature can be reduced by 3 K via an external time switch.
- Connecting cable: 1.5 m, 2-pole + control cable
- Colour: Pure white
- Test mark: VDE, CE compliant

Clearance dimensions

For safety reasons, the following minimum clearances from furniture and flammable objects must be observed:

- 10 cm from the top cover
- 10 cm from the side panels
- 15 cm from the floor
- 50 cm from the front (warm air discharge)

The wall mounting bracket ensures a clearance of 22 mm at the back.

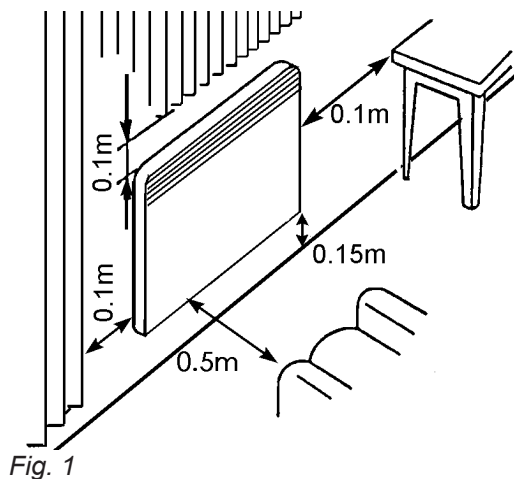


Fig. 1

Wall mounting bracket

Type EC4.A500S and EC4.A1000S

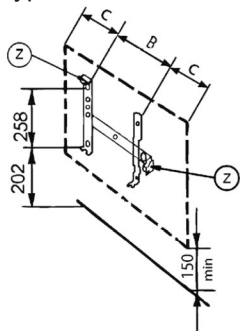


Fig. 2

② Catch

Type	Width	Dim. B	Dim. C
EC4.A500S	340	128	106
EC4.A1000S	420	208	106

Type EC4.A1500S and EC4.A2000S

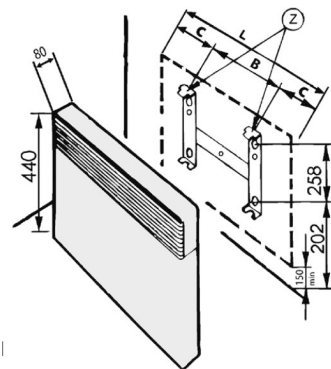


Fig. 3

② Catch

Type	Width L	Dim. B	Dim. C
EC4.A1500S	580	178	201
EC4.A2000S	740	320	210

Mounting the appliance on the wall

! Please note

The appliance must not be installed directly below a wall socket.
When installing the appliances in rooms with a bath or shower, the safety zone specified in international standards must be complied with.
If the appliance's power cable is damaged it must be replaced with a special power cable available from the manufacturer or the manufacturer's customer service representatives.

Attach the wall mounting bracket to the wall so that the appliance subsequently hangs horizontally when installed. The wall mounting bracket must be attached to a level surface.

Note

Use the wall mounting bracket as a marking and drilling template.

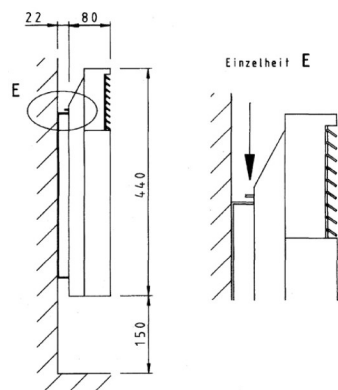


Fig. 4

The wall mounting bracket can be detached from the appliance by pressing on the tabs of the catches with a screwdriver (see detail E).

1. Align the wall mounting bracket depending on the product type and installation type.
2. Secure the wall mounting bracket in place using suitable rawl plugs and screws.



Danger

Using unsuitable fixing materials may cause the appliance to fall off the wall suddenly, leading to serious injury.

Only use screws and rawl plugs that are suitable for the type of wall (masonry, concrete, plasterboard, etc.).

3. Insert the appliance into the opened tabs at the bottom of the wall mounting bracket and push it on until the catches at the top or sides lock into the designated recesses in the back panel.

Electrical connection



Danger

Incorrect wiring can lead to serious injury from electrical current and result in appliance damage.

The connection must only be made by a qualified contractor.



Danger

Damaged connecting cables can lead to electric shock and short circuits.

Check the connecting cable for damage before installation.

The appliance is ready for operation once it is connected to a 230 V/50 Hz AC mains.

The movable power cable must not be routed over the air discharge grille.

The appliance must be disconnected from the mains across all poles over an isolating distance of at least 3 mm.

The power supply must be protected by an RCD not exceeding 30 mA.

Never open the appliance either when installing or connecting it.

Electrical connection (cont.)



Danger

Incorrect wiring can lead to serious injury from electrical current and result in appliance damage.

Ensure that the wires of the power cable are correctly connected.

Wire colours

Brown: Phase

Blue or grey: Neutral conductor

Black: Pilot line for external control (e.g. time switch)

Appliance is double-insulated.

Do not connect the appliance to earth (PE)!



Please note

Connecting the black wire (control cable/pilot line) to earth (PE) will cause a short circuit and will destroy the electronics.

Insulate the black wire if it is not being used as a control cable.

Control cable (pilot line)

The black wire of the power cable is used exclusively as a control cable (pilot line) for external control (e.g. time switch).



Vitoplanar EC4 operating instructions

Changing over operating mode via external control

Operating mode	Signal	Voltage (V)
Standard mode	—	0
Setback mode (approx. -3 K)		230

Commissioning and instructing the user

Commissioning and user instruction must be carried out by the contractor performing the installation. The user must be instructed in the operation of the appliance and in particular must be advised of the minimum clearances to be observed.

Appendix

Specification

Type EC4		A500S	A1000S	A1500S	A2000S
Electrical values					
Output	W	500	1000	1500	2000
Rated voltage	V~		230		
IP rating			IP 24		
Protection class			II		
Temperature range	°C	7 to 27			
Dimensions					
Width	mm	320	420	580	740
Height	mm		440		
Depth	mm	80 + 22 (wall mounting bracket)			
Weight	kg	3.7	4.3	5.6	6.7

Energy consumption data

The product data corresponds to the EU regulations of the directive on the environmentally sound design of energy related products (ErP).

Final decommissioning and disposal

Viessmann products can be recycled. Components and substances from the system are not part of ordinary household waste.

For decommissioning the system, isolate the system from the power supply and allow components to cool down where appropriate.
All components must be disposed of correctly.

Declaration of Conformity

Using the serial number, the Declaration of Conformity can be found on the following website:

www.viessmann.co.uk/eu-conformity

421AA4892.A00



Viessmann Werke GmbH & Co. KG
D-35107 Allendorf
Telephone: +49 6452 70-0
Fax: +49 6452 70-2780
www.viessmann.com

Viessmann Limited
Hortonwood 30, Telford
Shropshire, TF1 7YP, GB
Telephone: +44 1952 675000
Fax: +44 1952 675040
E-mail: info-uk@viessmann.com

5855581 Subject to technical modifications.