

Vitovolt 300

Type M400WK, M405WK, M410WK, M415WK, M420WK

Safety instructions



Please follow these safety instructions closely to prevent accidents and material losses.

Safety instructions explained

Note

Details identified by the word "Note" contain additional information.

Installation, commissioning, inspection, maintenance and repairs must only be carried out by an authorised, competent person (heating engineer/installation contractor).

Before working on the appliance/heating system, isolate it from the power supply (e.g. by removing a separate mains fuse or by means of a mains isolator) and safeguard against unauthorised reconnection.

Wear suitable personal protective equipment when carrying out any work.

Repairing components that fulfil a safety function can compromise the safe operation of the system. For replacements, use only original spare parts supplied or approved by Viessmann. Install the components with new gaskets.

Dimensions

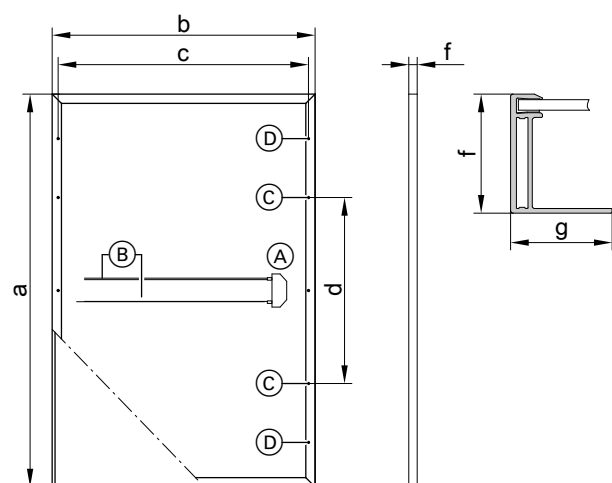


Fig. 1

- (A) Junction box
- (B) Connecting cables
- (C) 4 drilled holes 9 x 14 mm
- (D) 4 holes for equipotential bonding, \varnothing 6 mm

a	mm	1719
b	mm	1140
c	mm	1100
d	mm	1031
f	mm	30
g	mm	30

Mounting guidelines

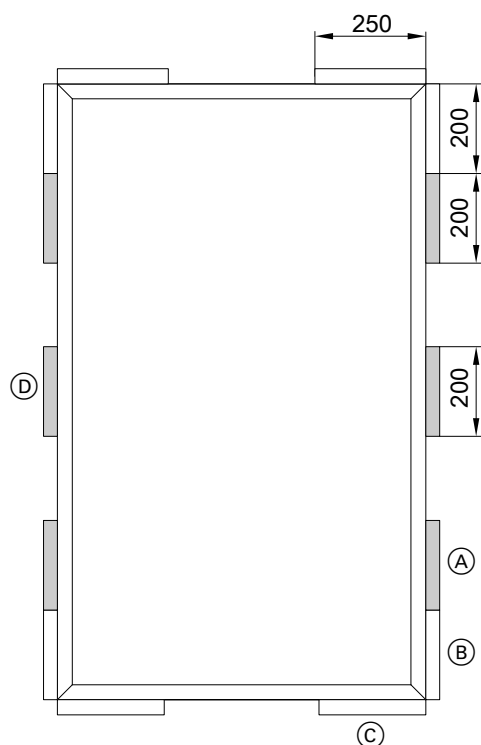


Fig. 2

Clamping area	Max. load due to	
	pressure	suction
(A)	5400 Pa (551 kg/m ²)	2400 Pa (245 kg/m ²)
(B)	1800 Pa (184 kg/m ²)	1600 Pa (163 kg/m ²)
(C)	2400 Pa (245 kg/m ²)	2400 Pa (245 kg/m ²)
(D)	If using (A) and (D) together 12000 Pa (1224 kg/m ²)	
		3200 Pa (326 kg/m ²)

Note

Clamping area (D) only if secured with 3 rails.

Specification

Performance data under STC (standard test conditions)

Vitovolt 300	Type	M400WK	M405WK	M410WK	M415WK	M420WK
Rated output P_{max}	W _P	400	405	410	415	420
Output tolerance	W	0/+5	0/+5	0/+5	0/+5	0/+5
MPP voltage U_{mpp}	V	38.6	38.7	38.8	38.9	39.0
MPP current I_{mpp}	A	10.36	10.47	10.57	10.67	10.77
Open circuit voltage U_{oc}	V	46.4	46.5	46.6	46.7	46.8
Short circuit current I_{sc}	A	10.97	11.02	11.07	11.12	11.17
Module efficiency	%	20.41	20.66	20.92	21.17	21.43

For measuring tolerances, see datasheet

Standard test conditions (STC):

- Insolation: 1000 W/m²
- Cell temperature: 25 °C
- Air mass: AM 1.5

Commissioning



"Vitovolt" installation and service instructions

Viessmann Climate Solutions SE
35108 Allendorf / Germany
Telephone: +49 6452 70-0
Fax: +49 6452 70-2780
www.viessmann.com



Viessmann Limited
Hortonwood 30, Telford
Shropshire, TF1 7YP, GB
Telephone: +44 1952 675000
Fax: +44 1952 675040
E-mail: info-uk@viessmann.com

6198490 Subject to technical modifications.